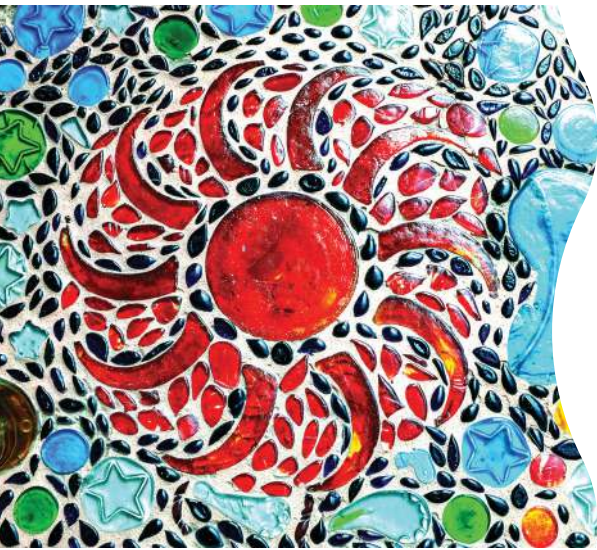


# — CLE at Sea 2020 —

7-night Mexican Riviera

# Cruise



on the brand-new  
Carnival Panorama  
February 8-15, 2020

## Ports of Call:

- Long Beach, California
- Cabo San Lucas, Mexico
- Mazatlan, Mexico
- Puerto Vallarta, Mexico

Cabin prices based on prevailing rates

Prices per person based on double occupancy,  
including taxes.

Subject to change based on availability and promotion.

Airfare may be made on your own, or through Rusty,  
to either LAX or LGB.

Al Mar Para Aprender • To Sea To Learn

# CLE at Sea 2020

## Learn How to Swim Like a Tax Shark

1.5 hours

*Presented by Christy Lee*

Drowning in tax issues related to your law practice? This course focuses on turning you into a tax shark, one who manages your law firm as a *bona fide* moneymaking enterprise. You'll bite into proactive strategies that can minimize tax liability while helping to audit-proof your business. And you'll discover how to maximize your chances for financial success.

## Keeping Your Head Above Water

3.0 hours

*Presented by Bar Counsel, Nelson Page*

Nelson Page will discuss the ethics and practice issues that the modern lawyer needs to be aware of to stay out of trouble and be successful. Topics will include the continuing evolution of the practice of law and the delivery of legal services, Technology challenges in the practice of law, lawyer wellness and its impact on the profession, and the evolution of ethical rules regarding discovery, conflicts, and attorney marketing.

## "In the Matter of": Navigating Family Dynamics in Probates and Heirs' Property Issues

2.0 hours

*Presented by D. Hope Watson and C. Renee Gregory*

Many probate and heirs' property resolutions depend on the heirs' defining and reaching agreements with each other concerning the current and future ownership and use of the land and its other related resources. Navigating that agreement can be a very delicate process. "In the Matter of" will explore those processes and mediation opportunities. Inherently, the discussion will include determining who is the client and the beneficiaries of any proposed legal action.

CLE schedule has not been determined. Programs will be held while ship is at sea on Sunday, Thursday, and Friday.

## Waves of Wellness: Learning Techniques that Reduce Stress and Anxiety

1.5 hours

*Presented by Nancy Nolin*

An introduction to techniques and approaches to implement the recommendations of the "Report of the National Task Force on Lawyer Well-Being" dated August 2017. One of the global recommendations was that those in the legal profession make a personal commitment to the importance of lawyer well-being. This session includes discussion and participatory exercises that introduce tools that can be used to reduce work-related stressors that may lead to substance abuse and impact mental health concerns.

## Winning from the Beginning; Opening Statements

2.0 hours

*Presented by M. Shane Henry*

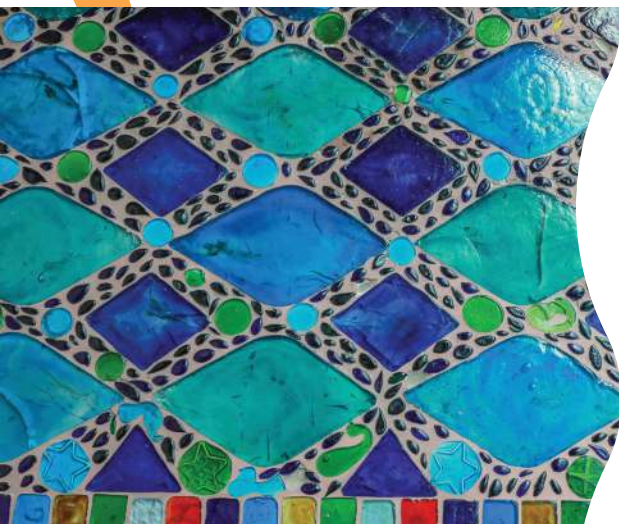
This presentation covers Techniques, Tips and Trial hacks for successful Opening Statements. Discussion includes persuasive techniques, structure and body movement. The goal is for Trial Lawyers to create the framework during Opening Statement through which the fact finder will view the entire case. Making the best first impression possible leads to positive verdicts.

## Trial Techniques: The Language of Trial

2.0 hours

*Presented by M. Shane Henry*

This presentation covers the fundamental elements of Trial from Jury Selection through Closing Argument. Each phase of Trial is covered with discussion of the techniques pertaining to each. The goal is the development of a baseline knowledge of the techniques and skills essential to the successful presentation of a case. Topics covered will range from basic fundamentals through persuasion techniques. Speaking the Language of Trial allows connection with the fact finder during each phase of Trial.



# CLE at Sea 2020



A member of the South Carolina Bar, **C. Renee Gregory** practiced in personal injury, family law, probate, and real estate prior to joining the Center for Heirs' Property Preservation. She is excited to use her experience in real estate and probate law to help families preserve their ownership in lands that their ancestors worked hard to acquire and maintain.



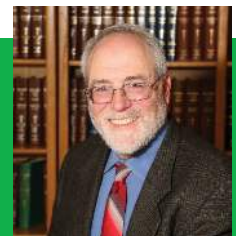
**M. Shane Henry** is co-founder of the Oklahoma law firm Dodd & Henry with famed national trial lawyer Roger Dodd. His practice focuses on personal injury and criminal cases. He is also senior partner of Henry+Dow which focuses on domestic cases. He has been recognized by his peers as being a member of Best Lawyers, being A.V. rated by Martindale Hubble, and most recently named as a Super Lawyer. For the past several years Shane has taught trial advocacy skills all across the state of Oklahoma and also in Washington D.C. and Las Vegas.



**Christy Lee** holds a J.D. from Texas Tech University School of Law and an LL.M. in Taxation from University of Florida – Levin College of Law. In 2009, she opened her law firm, Law Offices of Christy Lee, P.C., in Anchorage; it remains the only full-service tax boutique in Alaska. Christy also has offices in Fort Worth, Texas, and Honolulu, Hawaii. She practices in all areas involving tax law, including federal and state taxation, excise and foreign tax, business, and probate. She litigates as necessary on behalf of the client. Since 2014, Christy has written case summaries about tax-related probate matters for the *American Bar Association Probate & Property Magazine*, a bi-monthly publication, and she serves as a consulting member of the Tax Freedom Institute, Inc.



**Nancy Nolin** is a Psychotherapist and a Mindfulness Coach who has offered training to individuals, as well as to large audiences at National/International Conferences. Nancy uses “fun” and unique experiential approaches to teach stress management. Nancy will instruct attendees to explore the events and situations that trigger stress/anxiety and how to implement cognitive techniques and mindfulness as management/coping skills in this workshop.



**Nelson G. Page** became Bar Counsel for the Alaska Bar Association in 2017 after practicing with Burr, Pease and Kurtz for 38 years. His practice included regular representation of professionals in malpractice litigation. He served on the Board of Governors of the Alaska Bar from 2013-2016 and was president of the Board in 2015-16. He is a frequent speaker on ethics issues.



In 2014, **D. Hope Watson** joined the Center for Heirs' Property Preservation in South Carolina. Hope is a proud veteran of the United States Army and is a Certified Civil Court Mediator. She enjoys spending her time helping families learn about the legacy and responsibilities of property ownership and using the knowledge to protect their ownership of their land.

February 8-15, 2020

[AlaskaBar.org/2020CLEByTheSea](https://AlaskaBar.org/2020CLEByTheSea)

# CLE at Sea 2020

## Ports of Call



### Long Beach, California

Days 1, 8

Long Beach is a coastal city and port in Southern California. Moored in its Queensway Bay, RMS Queen Mary is a retired ocean liner and museum ship. The waterfront Aquarium of the Pacific features touch tanks and a shark lagoon. Modern and contemporary works are on display at the Museum of Latin American Art. Rancho Los Cerritos is a 19th-century adobe home and museum set in expansive gardens.



### Cabo San Lucas, Mexico

Day 3

Here at the tip of the Baja Peninsula where the amazing rock formation known as Los Arcos guards the entrance to the bay lies Cabo San Lucas which was once a hideout for pirates on the lookout for trading ships. Here you can spy on a no-longer-secret underwater garden through a glass-bottom boat, flirt with a whale or sea lion, shop at a quayside bazaar, or rekindle romance at the secluded Playa del Amor.



### Mazatlan, Mexico

Day 4

Translated, Mazatlan means “place of deer” from the ancient Nahuatl tongue. Great herds of deer were said to have roamed this area, located at the foot of the Sierra Madre Mountains. Resplendent with rich tradition and folklore, Mazatlan is said to have been frequented by pirates who left behind their buried treasure. Noted for its sparkling sand beaches and warm Pacific waters, Mazatlan is an ideal spot to get in a swim.



### Puerto Vallarta, Mexico

Day 5

Experience the warmth of Puerto Vallarta, which is quaint and full of history, yet modern, vibrant, exotic. Discover a destination of relaxing beaches, world class restaurants, and the latest in ecotourism and extreme adventure, in a setting that is internationally recognized for its charm and friendliness, with a backdrop of mountains, rivers, coastline, and emerald green waves of the Pacific Ocean.

February 8-15, 2020

[AlaskaBar.org/2020CLEByTheSea](http://AlaskaBar.org/2020CLEByTheSea)

# CLE at Sea 2020

## Bring the entire family!



### Camp Ocean

Ages 2-11

Cost: Included

The little ones can enjoy the best parts of summer camp, aboard their Carnival cruise. At Camp Ocean, kids will have a blast in supervised, age-based groups and give each a cool marine-life label: Penguins (2 to 5 years), Stingrays (6 to 8 years) and Sharks (9 to 11 years). Together with their group they'll enjoy tons of fun-filled, age-appropriate activities like arts and crafts, songs, games, toys, dancing, movies and video games. When it's mealtime, kids eat together and get their own menus with back-on-land faves like mac & cheese, chicken nuggets and more. The whole time, experienced counselors will be there to make sure everyone in these small groups has an amazing time. Plus, when the sun goes down it's Night Owls time — fees apply, but kids get to stay up late having fun while their parents also enjoy themselves well into the night.

### Sky Zone

Additional cost

Leave the ground behind for a while and experience the first-ever Sky Zone at sea. Carnival Panorama is getting this uniquely fun indoor trampoline park and challenge zone, a shrine to soaring that's open to adventure-seekers of all ages. Lose the shoes and gain vacation memories with fun challenges, plus find a schedule of gravity-defying dodgeball sessions or slam-dunk basketball experiences. Look for night-time blacklight glow parties and bouncy-fun exploration sessions just for toddlers.



February 8-15, 2020

[AlaskaBar.org/2020CLEByTheSea](http://AlaskaBar.org/2020CLEByTheSea)

# CLE at Sea 2020

## SportSquare featuring SkyRide

Cost: Included

At SportSquare on Carnival Panorama, it isn't just winning — but even just playing — that's big fun. At SkyRide, strap in and zip safely around our suspended two-lane bike course high above the deck. At The Clubhouse, try indoor activities like mini-bowling and pool... while outdoor soccer, volleyball and ping-pong are always just steps away. Try for a hole-in-one at SkyGreens, sink threes on the basketball court, and challenge yourself to amazing new heights at SkyCourse, our ropes course.



## Choose Fun Waterworks

Cost: Included

Fun is always a great choice — haven't we heard that somewhere before? — and to get a little extra of it into your Carnival Panorama vacation, turn your attention to CHOOSE FUN WaterWorks™! Hydro-thrill seekers, you'll find your kind of fun with the two huge slides inviting you to experience some prime splash action. Choose RED FUN™ and you're looking at a raft slide featuring open-air corkscrews that let everybody hear you scream with delight, or choose BLUE FUN™ for straightaways that let you pick up serious speed before splashdown. There's even a giant dumping bucket, splash toys and more ways to soak up the fun.



February 8-15, 2020

[AlaskaBar.org/2020CLEByTheSea](http://AlaskaBar.org/2020CLEByTheSea)

# CLE at Sea 2020

## Havana Bar & Pool

Additional cost

On Carnival Panorama you'll find the Havana Bar & Pool. Good find — the pool's an exclusive retreat to paradise by day, and the bar becomes a hot dance spot when the sun goes down. Grab a seat at the bar and order up a handcrafted Cuban cocktail like a traditional daiquiri or classic mojito. This bar is just steps from the pool, whose ocean view and atmosphere mingles with the bar's own, for a bit of that old-time Cuban resort flavor.



## Serenity Adult-Only Retreat

Cost: Included

Somebody at Carnival knows just what you need, and it's pretty much exactly the Serenity Adult-Only Retreat. Look, you'll still be on the same ship as the kids, the hoopa, and all the Carnival-style excitement... but you could easily forget, because when you're at Serenity you could not be further from it all. The world you'll find yourself in is one of complete peace, sea breezes, swaying hammocks and, of course, a nearby bar. It's the place to get done the kind of stuff you just can't seem to do anywhere else — reconnect with your partner, finish that book, or do absolutely, blissfully, nothing at all.

And so much more....

February 8-15, 2020

[AlaskaBar.org/2020CLEByTheSea](http://AlaskaBar.org/2020CLEByTheSea)



CLE Credits are approved or pending in the following states:

- Alaska - 7.5 General + 4.5 Ethics
- Delaware
- Georgia - 12 CLE hours including 5 Ethics hours and 6 Trial Practice hours
- Hawai'i - 6 General & 4.5 Ethics Credits
- Idaho - 7.5 General & 4.5 Ethics Credits
- Kansas
- Maine - 6 General & 6 Ethics CLE Credits
- Maryland
- Montana - 7.5 General & 4.5 Ethics Credits
- Oklahoma - 14.5 Credits including 3.5 Ethics Credits
- Oregon - 7.5 General, 3.0 Ethics, & 1.5 Mental Health and Substance Use
- Pennsylvania
- South Carolina
- Virginia
- Wyoming - 12 CLE Credits including 4.5 Ethics Credits

## BOOK YOUR CABIN NOW!

**\$500 down, full payment due November 1.**

**Call Rusty at 412-770-6511. [bit.ly/2EXvamR](https://bit.ly/2EXvamR)**

Must book cabin with our group to participate in extra amenities offered. (Announced later.)

**1**

## BOOK YOUR FLIGHT

**Airfare/transportation must be booked separately to either Long Beach or LAX.**

(not included in price of cruise)

**2**

## REGISTER FOR CLE SESSIONS

**[AlaskaBar.org/2020CLEByTheSea](https://AlaskaBar.org/2020CLEByTheSea)**

**\$495 CLE Early-Bird Registration Fee**

**\$595 after November 1**

No refunds after November 1.

**3**

Questions should be addressed to  
Lori Brownlee, CLE Director, at [lori@alaskabar.org](mailto:lori@alaskabar.org)  
or 907-263-1841